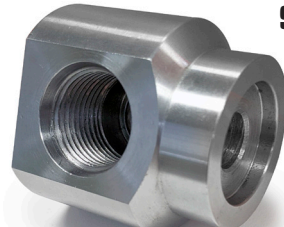
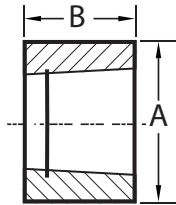
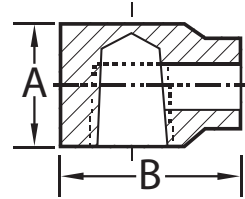


Kepeco Sealing Supplies

WELD-ON PORTS



90°



MATERIAL : AISI-1020 STEEL

Weld-on ports for hydraulic cylinders are components that facilitate the connection of hydraulic lines to the cylinder. These ports are welded directly onto the cylinder's body and are used to channel hydraulic fluid into and out of the cylinder, enabling its operation.

Ref.Number	Port Size	A	B	Net \$
NPT				
HCNPT-1/4	1/4-18 NPT	0.870	0.500	3.56
HCNPT-3/8	3/8-18 NPT	1.000	0.500	3.83
HCNPT-1/2	1/2-14 NPT	1.250	0.680	5.09
HCNPT-3/4	3/4-14 NPT	1.500	0.810	7.11
HCNPT-1	1-11.5 NPT	1.750	1.180	10.67
SAE				
HCSAE-04	SAE 4	0.750	0.560	2.86
HCSAE-05	SAE 5	0.870	0.620	15.33
HCSAE-06	SAE 6	0.870	0.680	2.99
HCSAE-08	SAE 8	1.120	0.680	3.09
HCSAE-10	SAE 10	1.250	0.870	3.79
HCSAE-12	SAE 12	1.500	1.000	4.93
HCSAE-16	SAE 16	1.750	1.250	6.16

Ref.Number	Port Size	A	B	Net \$
90° Degree NPT				
HCNPT-1/4/90	1/4-18 NPT	1.250	1.250	3.06
HCNPT-3/8/90	3/8-18 NPT	1.250	1.560	4.62
HCNPT-1/2/90	1/2-14 NPT	1.620	1.750	6.95
HCNPT-3/4/90	3/4-14 NPT	2.000	1.930	11.25
90° Degree SAE				
HCSAE-04/90	SAE 4	1.120	1.120	3.74
HCSAE-06/90	SAE 6	1.250	1.250	4.67
HCSAE-08/90	SAE 8	1.620	1.620	7.75
HCSAE-10/90	SAE 10	1.750	1.875	10.31
HCSAE-12/90	SAE 12	2.125	2.000	12.43