

Kepeco **Sealing** Supplies

Solutions for all sealing applications



www.sealsonline.com

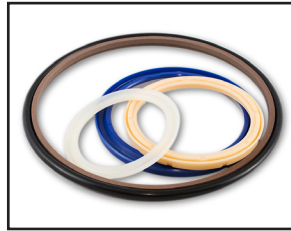
PRODUCTS



Rod Wipers



Rod Seals



Buffer Seals



Piston Seals



Vee Packing



Guiding Elements



Bushings



Engineered Polymer Bushings



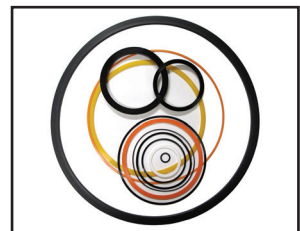
Spherical Plain Bearings



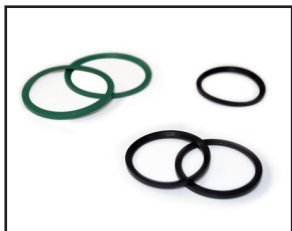
O-Rings



Vulcanized O-Rings



Back-up Rings



DIN Connector Rings



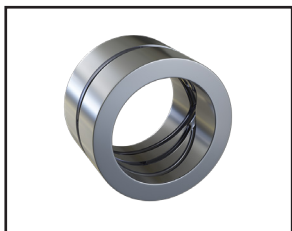
Head Seals



Flange Seals



Fastener Seals and Bonded Seals



Hardened Steel Bushings



Weld-On Ports



O-Ring Kits and Accessories



Caps and Plugs

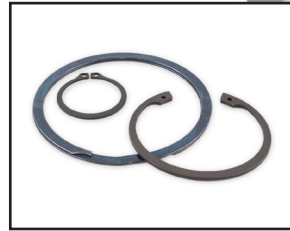
PRODUCTS



Sealants and Adhesives



Lock Nuts



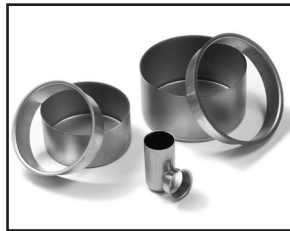
Retaining Rings



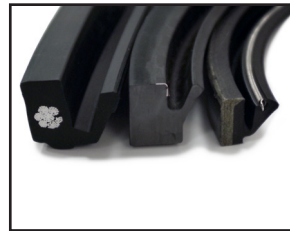
Shaft Seals



V-Rings



Shaft Sleeves



Precision Split Oil Seals



Bearing Isolators



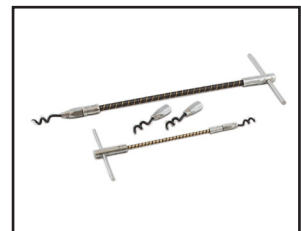
Mechanical Face Seals



Spring Energized
Polymer Seals



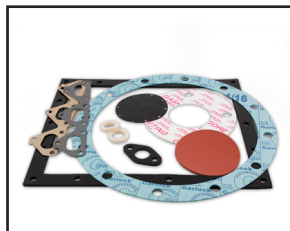
Braided Packing



Packing Pullers



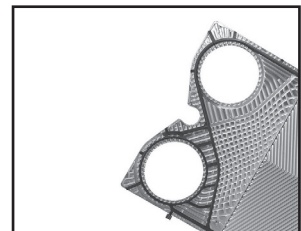
Sanitary Gaskets



Gaskets



Plate Seals



Heat Exchanger
Gaskets



Cylinder Seal Kits



Custom Kitting
and Labeling



Accumulators



Extruded Profiles

XPRESS

IN HOUSE MACHINING CENTER

Precision – Quality – Quick Turnaround

Our rapid Xpress cell machining center offers you custom made solutions. Our CNC lathe is able to offer you complex sealing solutions of both high precision and quick turnaround time, manufactured from state-of-the-art materials. Regardless of your industry or your application, we will strive to assist you in both design and production of high performance seals in a speedy time frame.

Materials

- AFLAS®
- DYNAMAX®
- EPDM
- FPM – FKM
- HNBR
- NBR
- NYLON
- PEEK
- POLYURETHANE
- SILICONE
- TEFLON®
- UHMW



Full range of materials available for FDA applications

EXCLUSIVE

**NEW POLYURETHANE
GENERATION
94 AU 30000**

FREUDENBERG-NOK
INNOVATING TOGETHER



Contact us for more information!

OTHER SERVICES

- ✓ Custom packaging/labeling
- ✓ Cut gaskets
- ✓ Engineering and technical assistance
- ✓ On site training seminars
- ✓ Precision split Clipper shaft seals
- ✓ Vulcanizing