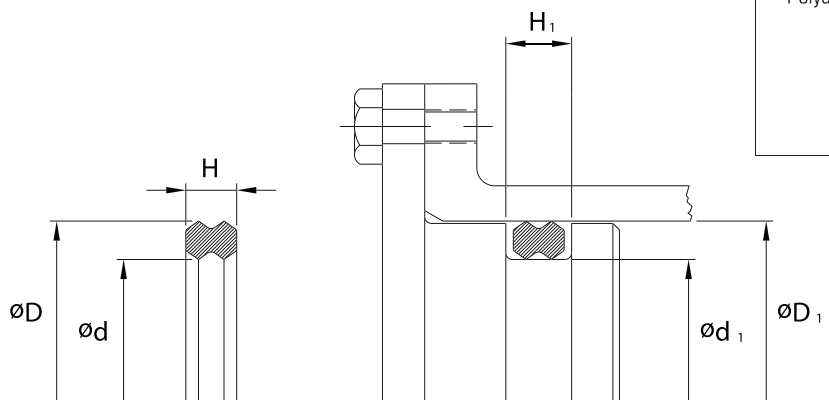


NEW PRODUCT

Fluidseal

HEAD SEALS



Standard Material	Temperature Range	Pressure Range
Polyurethane	Low Extreme	
	-65°F (-54°C)	N/A
	Normal Operation	
	-40°F to +250°F (-40°C + 121°F)	≤5000 psi (≤345 bar)
High Extreme		
+265°F (+129°C)	≤10 000 psi (≤689 bar)	

Head Seals are used in static applications as replacements to O'Ring/Back-up assemblies. High performance material and a symmetrical geometry greatly reduces the risk of installation damage and extrusion at higher pressures. This product offers an improved fit and a more stable profile once installed in the gland.

Features

- High Extrusion Resistance
- Improved Sealing at Low and High Pressure
- Low Compression Set
- Tear Resistant
- Easy Installation
- No Pinching or Twisting
- Fits Standard O-Ring Grooves
- Oil Resistant
- Hydrolysis Resistant
- Reduced Manufacturing Cost
- Faster Cylinder Assembly
- Improved Reliability
- Reduced Warranty Cost

Sealing Solutions Group

www.sealsonline.com

QUÉBEC - MONTRÉAL - MISSISSAUGA - WINNIPEG - EDMONTON - CALGARY - VANCOUVER

Fluidseal

Ref.Number	Bore Diameter		Nominal Seal Dimensions			Housing Dimensions					
	D1	Tol.	D	d	H	d1	Tol.	Head dia	Tol.	H1	Tol.
HS12-218	1.500	+0.002 -0.000	1.500	1.250	0.187	1.278	+0.000 -0.002	1.490	+0.002 -0.000	0.208	+0.005 -0.000
HS12-222	1.750		1.750	1.500	0.187	1.528		1.740		0.208	
HS12-224	2.000		2.000	1.750	0.187	1.778		1.990		0.208	
HS12-226	2.250		2.250	2.000	0.187	2.028		2.240		0.208	
HS12-227	2.375		2.375	2.125	0.187	2.153		2.365		0.208	
HS12-228	2.500		2.500	2.250	0.187	2.278		2.497		0.208	
HS12-230	2.750		2.750	2.500	0.187	2.528		2.747		0.208	
HS12-232	3.000	▼	3.000	2.750	0.187	2.778		2.997	▼	0.208	
HS12-234	3.250	+0.003 -0.000	3.250	3.000	0.187	3.028		3.247	+0.003 -0.000	0.208	
HS12-235	3.375		3.375	3.125	0.187	3.153		3.372		0.208	
HS12-236	3.500		3.500	3.250	0.187	3.278		3.497		0.208	
HS12-338	3.500		3.500	3.125	0.281	3.160		3.497		0.311	
HS12-238	3.750		3.750	3.500	0.187	3.528		3.747		0.208	
HS12-240	4.000		4.000	3.750	0.187	3.778		3.997		0.208	
HS12-342	4.000		4.000	3.625	0.281	3.660	▼	3.997		0.311	
HS12-242	4.250		4.250	4.000	0.187	4.028	+0.000/-0.003	4.247		0.208	
HS12-344	4.250		4.250	3.875	0.281	3.910	+0.000/-0.002	4.247		0.311	
HS12-244	4.500		4.500	4.250	0.187	4.278	+0.000 -0.003	4.497		0.208	
HS12-346	4.500		4.500	4.125	0.281	4.160		4.497		0.311	
HS12-246	4.750		4.750	4.500	0.187	4.528		4.747		0.208	
HS12-348	4.750		4.750	4.375	0.281	4.410	▼	4.747		0.311	
HS12-248	5.000		5.000	4.750	0.187	4.778	+0.000 -0.004	4.997		0.208	
HS12-350	5.000		5.000	4.625	0.281	4.660		4.997		0.311	
HS12-250	5.250		5.250	5.000	0.187	5.028		5.247		0.208	
HS12-352	5.250		5.250	4.875	0.281	4.910		5.247		0.311	
HS12-251	5.375		5.375	5.125	0.187	5.153		5.372		0.208	
HS12-353	5.375		5.375	5.000	0.281	5.035		5.372		0.311	
HS12-252	5.500		5.500	5.250	0.187	5.278		5.497		0.208	
HS12-354	5.500		5.500	5.125	0.281	5.160		5.497		0.311	
HS12-254	5.750		5.750	5.500	0.187	5.528		5.747		0.208	
HS12-356	5.750		5.750	5.375	0.281	5.410		5.747		0.311	
HS12-256	6.000		6.000	5.750	0.187	5.778		5.997		0.208	
HS12-358	6.000		6.000	5.625	0.281	5.660		5.997		0.311	
HS12-360	6.250		6.250	5.875	0.281	5.910		6.247		0.311	
HS12-362	6.625		6.625	6.250	0.281	6.285		6.622		0.311	
HS12-260	6.750	▼	6.750	6.500	0.187	6.528		6.747	▼	0.208	
HS12-366	7.625	+0.004 -0.000	7.625	7.250	0.281	7.285		7.622	+0.004 -0.000	0.311	
HS12-367	7.875		7.875	7.500	0.281	7.535		7.872		0.311	
HS12-268	8.750		8.750	8.500	0.187	8.528		8.747		0.208	
HS12-371	8.875	▼	8.875	8.500	0.281	8.535	▼	8.872	▼	0.311	▼

(604) 278-6808 • fluidseal@sealsonline.com

13680 Bridgeport Road #5 • Richmond • British Columbia • V6V 1V3

www.sealsonline.com